

## SECOND DRAFT PIKETBERG GATEWAY AND CENTRAL INTEGRATION ZONE PRECINCT PLAN



New skatepark connected to outdoor gym with shading elements, seating & lighting



New community facility opening onto and defining public space



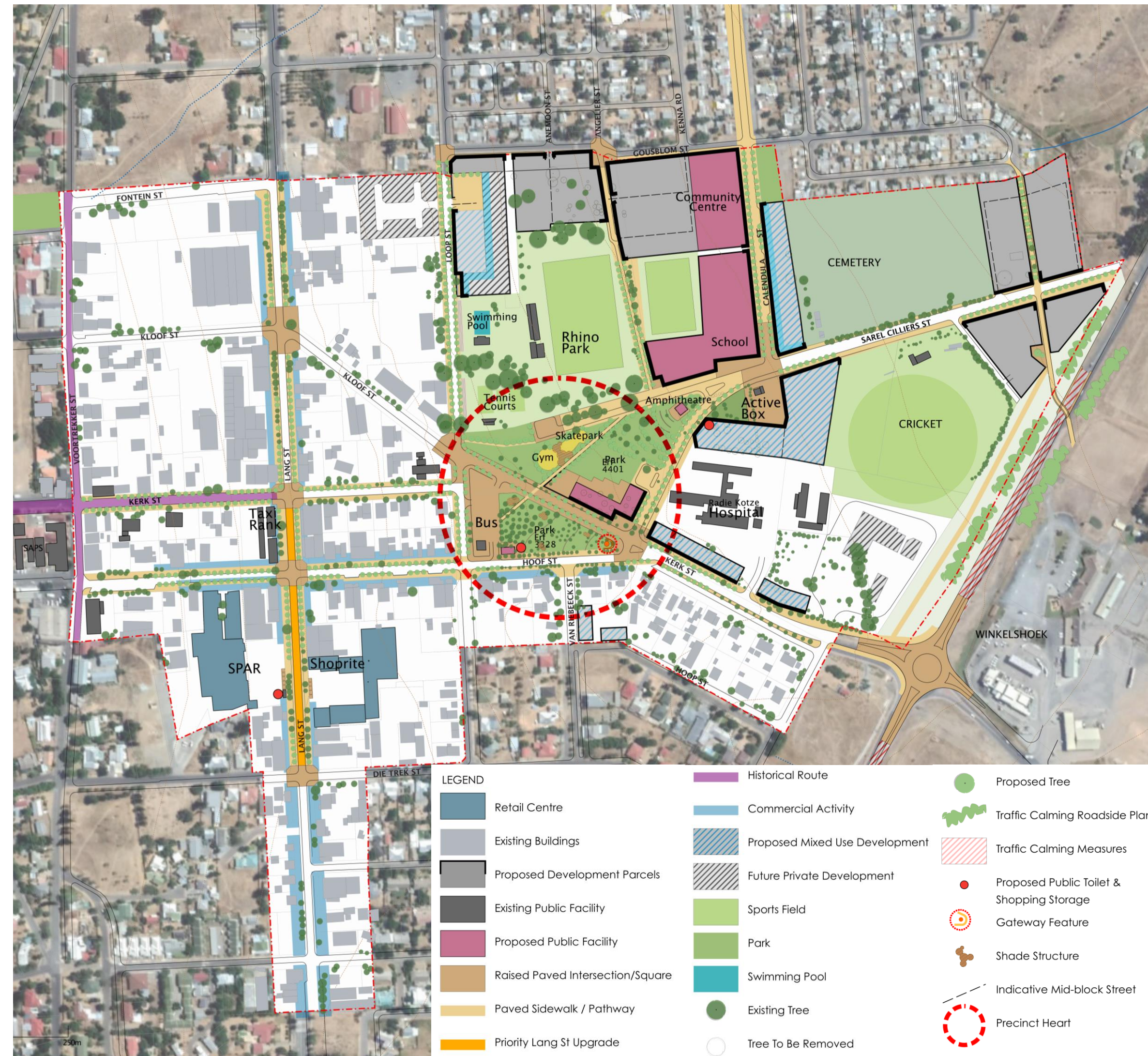
Paving, shade, trees, seating & lighting upgrades to Lang, Hoof, Loop, Kerk & Calendula St



New gateway and entrance feature



New pedestrian route connecting Gousbloem St to Sarel Cilliers



Public space & play park associated with the Active Box defined by mixed-use development



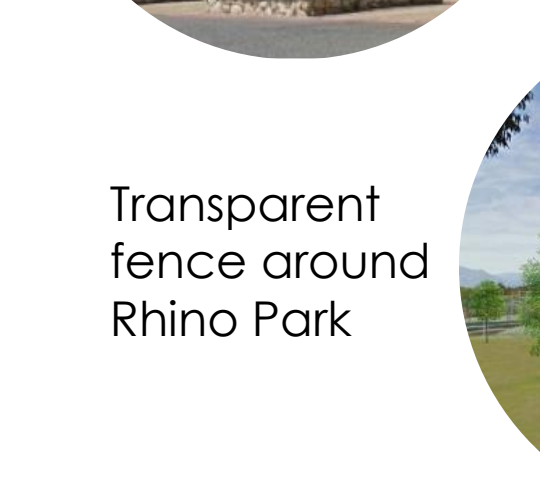
New public amphitheatre & new street next to hospital



New School and Community Centre



Mixed-use residential



Transparent fence around Rhino Park



**SUBMIT YOUR COMMENTS BY THE 14 DECEMBER 2020 TO:**



E-mail [precinctplan@gmail.com](mailto:precinctplan@gmail.com)



WhatsApp 081 311 3344

**FOR MORE INFORMATION VIST:**



[www.bergmun.org.za](http://www.bergmun.org.za)



“Piketberg Gateway and Integration Zone Precinct Plan” on Facebook

**SUBMIT COMMENTS BY  
14 DECEMBER 2020**